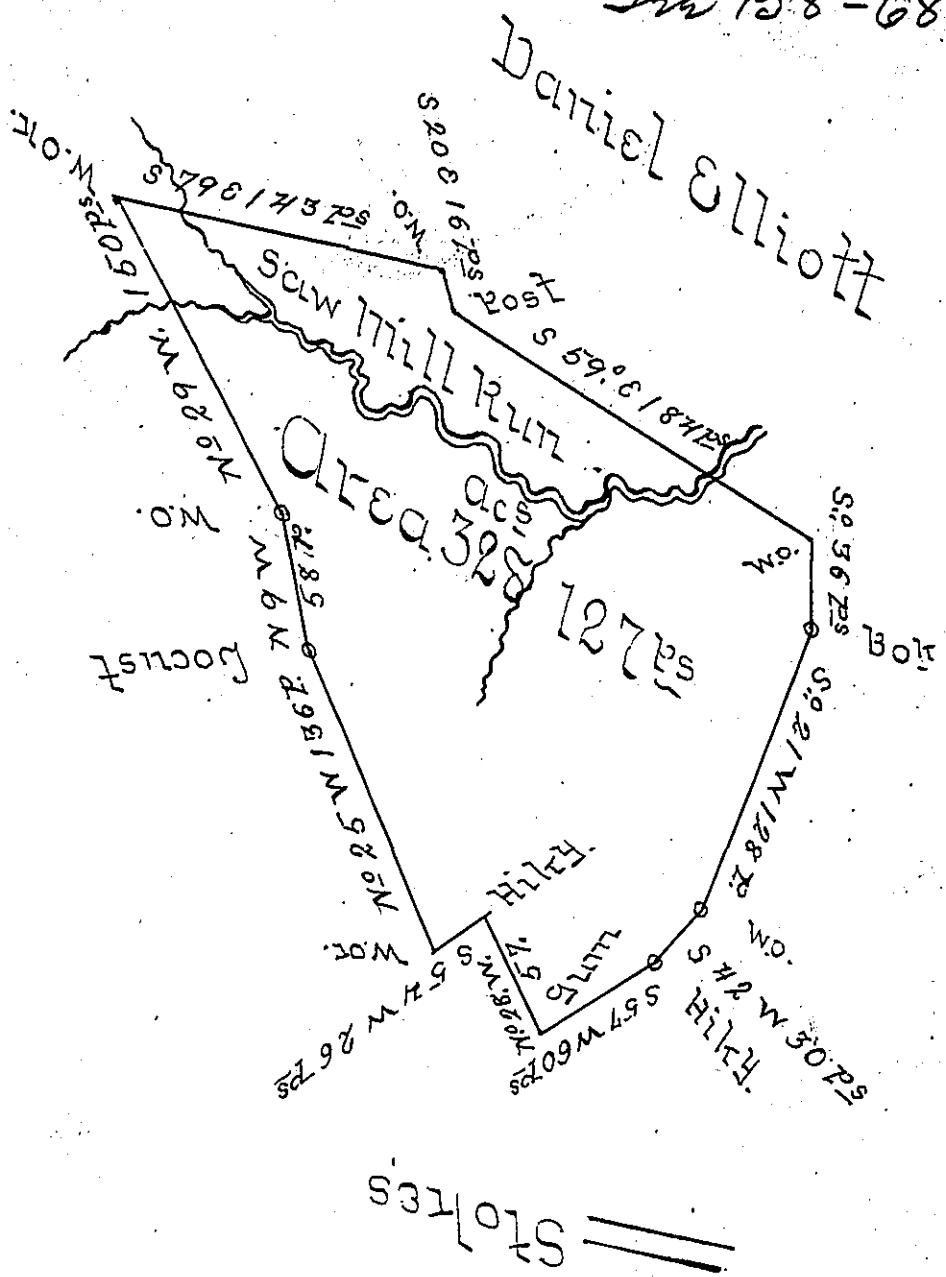


SW B-8-68

340  
Not Pat  
3-90



A Draught of a Survey lying on the Sawmill Run in (Washington County) contg. 328 Ac<sup>s</sup> & 127<sup>ps</sup> without any Allow<sup>cs</sup> executed Aug<sup>st</sup> 1<sup>st</sup> 1785 for James Kerns Ass<sup>ee</sup> of Hugh O'Hara in pursuance of a Certificate for 400 Ac<sup>s</sup> granted to S<sup>d</sup> O'Hara by the Comm<sup>rs</sup> appointed by Verq<sup>a</sup> to adjust the Titles to unpatented Lands in the Counties of Monongalia, Yough<sup>a</sup> and Ohio, and regularly entered with the County Surveyor as appears from the authenticated List of Entries transmitted from the off of the Surveyor General.

John Lukens Esq<sup>r</sup> } Presley Newill } D. Survey<sup>r</sup>  
 Survey<sup>r</sup> Gen<sup>l</sup> } Matthew Ritchie }

IN TESTIMONY that the above is a copy of the original remaining on file in the Department of Internal Affairs of Pennsylvania, made conformably to an Act of Assembly approved the 16th day of February, 1833, I have hereunto set my Hand and caused the Seal of said Department to be affixed at Harrisburg, this SECOND day of DECEMBER 1902.

*James W. Patton*  
 Secretary of Internal Affairs.